

Products of Fixing to Beams and Roof Panels

Beam Clip P

Group: 1331

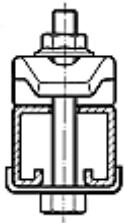
Application

Universal clamping element for bi-lateral attachment of crossbars for pipe runs, ducts, cable lines and equipment to steel beams.

The maximum clamping range may be extended by up to 10 mm by using spacers. Any thicker spacers should be welded to the crossbar.

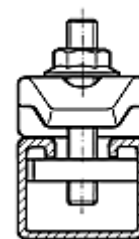
Installation

Determination of the required bolt length L_{min} :



Bolts:
P 1: M8 or M10
P 2: M12
P 3: M16
P 4: M16

Torque $\pm 10\%$
50 Nm
85 Nm
150 Nm
150 Nm



Arrangement A

Pass-through bolt
with holding bracket

$$P 1: L_{min} = a + b + 37 \text{ [mm]}$$

$$P 2: L_{min} = a + b + 43 \text{ [mm]}$$

$$P 3: L_{min} = a + b + 48 \text{ [mm]}$$

$$P 4: L_{min} = a + b + 55 \text{ [mm]}$$

Arrangement B

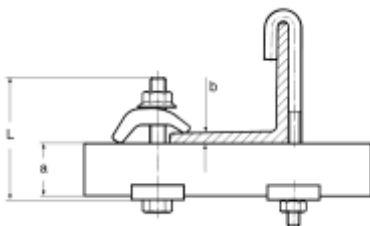
Channel nut HZ

$$P 1: L_{min} = b + 40 \text{ [mm]}$$

$$P 2: L_{min} = b + 45 \text{ [mm]}$$

$$P 3: L_{min} = b + 50 \text{ [mm]}$$

$$P 4: L_{min} = b + 60 \text{ [mm]}$$



Technical Data

Type	Working load
P 1	4.0 kN
P 2	5.0 kN
P 3	7.0 kN
P 4	8.0 kN

Note: For vertical installation please contact Technical Department

Material: Cast iron or steel, electro-galvanised

Type	Size range [mm]	ø D [mm]	L [mm]	B [mm]	W [kg]	Quantity [pack]	Part number
P 1	1 - 23	11	50	36	0.10	50	116196
P 2	1 - 33	13	62	50	0.24	25	116202
P 3	1 - 33	17	69	50	0.26	25	116248
P 4	4 - 40	17	75	54	0.30	25	116257